



**Benchmark**  
Group



# Foundation of Chronic Disease

COURSE INFORMATION



## Course snapshot

<b>COURSE TITLE</b>	<b>Foundations of Chronic Disease</b>
<b>VALUE FOR ORGANISATIONS</b>	Build an important base level of knowledge for chronic disease management in primary care, the healthcare impact and burden, and enable progression in further specific disease-state learning.
<b>UNITS OF COMPETENCY</b>	<b>NA</b>
<b>COST</b>	Free course
<b>PRE-READING</b>	There is no pre-reading for this course
<b>DELIVERY &amp; ASSESSMENT</b>	There are no associated formal assessments with this course. All learning is completed online with real time learning feedback provided via theory questions covering essential knowledge and skills. This style of feedback is known as a 'formative assessment', a self-marking process that provides immediate results and feedback.
<b>ESTIMATED HOURS OF STUDY</b>	10 hours of active learning.
<b>CPD HOURS</b>	As a general guide, one (1) hour of active learning equates to one (1) hour of CPD. It is the responsibility of the individual student to calculate how many hours of active learning have been completed. The hours of active learning estimated above should act as a guide to CPD hours.
<b>ENTRY REQUIREMENTS</b>	Entry requirements on the next page.
<b>TERMS AND CONDITIONS</b>	<a href="https://benchmarkgroup.com.au/terms-and-conditions">Visit benchmarkgroup.com.au/terms-and-conditions</a> <a href="#">View Student Handbook</a>

## Course summary

The Foundations of Chronic Disease course aims to provide students with foundation knowledge and has been designed for professionals new to the field of chronic disease management.

The course explores a range of topics including the burden of chronic disease globally and locally, understanding the patient journey and communication styles to enhance health literacy, understanding the use and appropriateness of prevention and prevention tools, identifying readiness for change and health behaviours, and the role of health data to inform service delivery.

## Course outcome

Upon successful completion of the course students should have the ability to:

- Understand the definition, types and burden chronic diseases have across Australia
- Identify priority groups and health gaps in our communities
- Increase awareness and understanding of the overall disease burden experienced by First Nation's peoples
- Identify social, biomedical and behavioural risk factors that may influence the development of chronic disease
- Recognise the importance of communication styles, health literacy levels, cultural safety in providing person centred care
- Identify the need for prevention and the use of prevention tools
- Understand the role of primary healthcare in care coordination and chronic disease management.

## Course content

The Foundations of Chronic Disease course is the perfect starting point in your chronic disease educational journey. Upon completion, you can then choose from a

range of extended learning options in our chronic disease category, including four nationally accredited courses:

- Chronic Conditions of the Foot
- Chronic Disease Care Planning
- Chronic Conditions and Nutrition
- Chronic Disease Management Tools

## Entry requirements

Entrants to the Foundations of Chronic Disease course typically are primary healthcare professionals. Relevant roles could include but are not limited to:

- Aboriginal and/or Torres Strait Islander Health Practitioners
- Aboriginal and/or Torres Strait Islander Health Workers
- Allied Health Professionals
- Dietitians
- Enrolled Nurses
- Fitness Professionals
- General Practice Registrars
- General Practitioners
- Nurse Practitioners
- Nutritionists
- Other Health Professionals
- Registered Nurses
- Social and Emotional Wellbeing Worker

## About accessIQ

We are paving the way for innovative and easy online learning through our bespoke online course and assessment platform, accessIQ.

- Study anywhere, anytime
- Edit saved answers, review before submitting
- Live student console – tracks assessment, enrollments and waitlists
- Access statement of results and resource library.

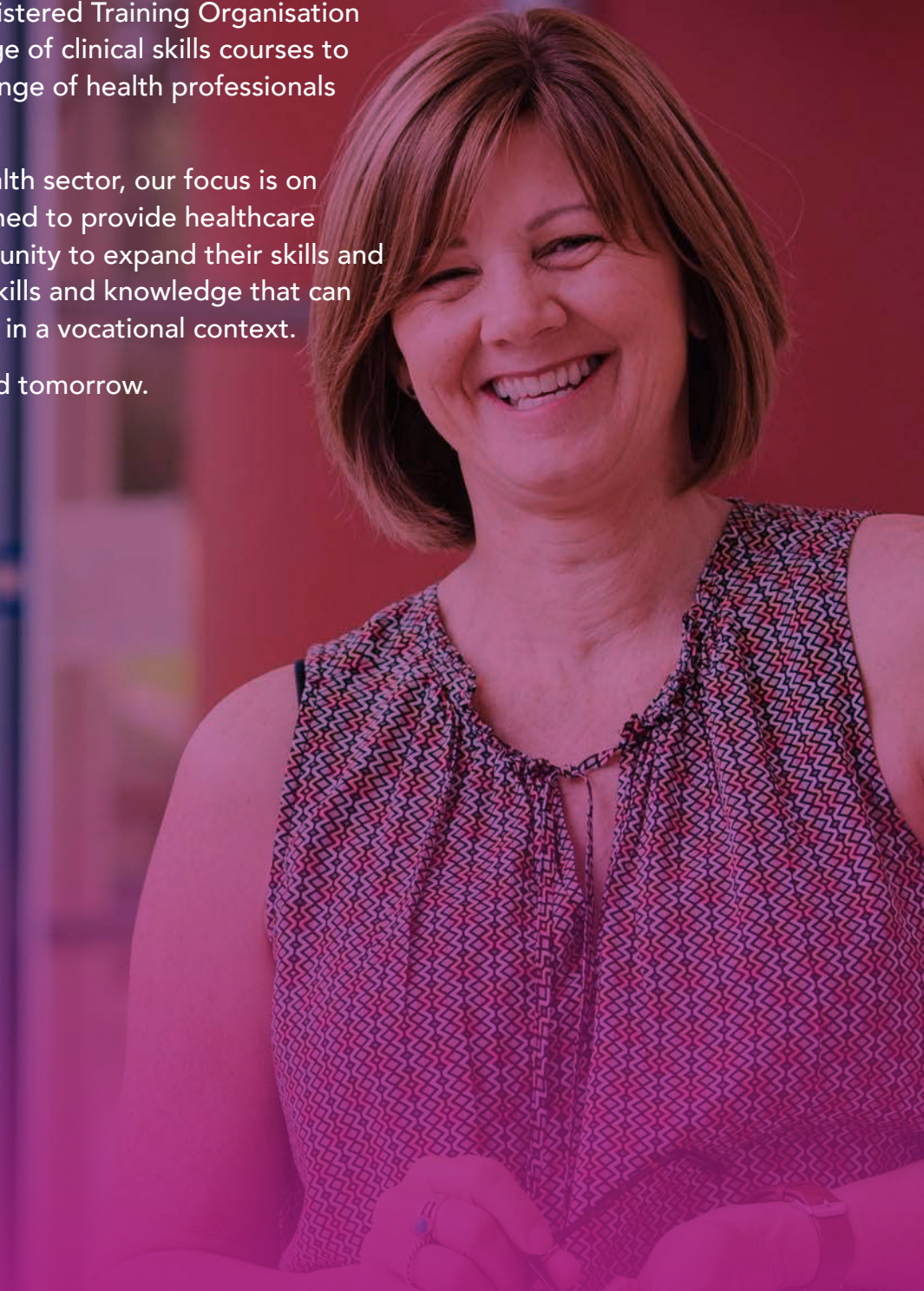


# About Benchmark Group

Benchmark Group is a Registered Training Organisation (RTO 21824) delivering a range of clinical skills courses to meet the needs of a broad range of health professionals across Australia.

As an RTO working in the health sector, our focus is on the delivery of courses designed to provide healthcare professionals with the opportunity to expand their skills and careers. We concentrate on skills and knowledge that can be immediately implemented in a vocational context.

Skills learnt today can be used tomorrow.



For Further information contact:

Ground Floor 101 Cremorne Street  
Cremorne VIC 3121

1300 855 568

[courses@benchmarkgroup.com.au](mailto:courses@benchmarkgroup.com.au)

[www.benchmarkgroup.com.au](http://www.benchmarkgroup.com.au)

