



Benchmark
Group



Otoscopy

COURSE INFORMATION



Course snapshot

COURSE TITLE	Otoscopy
COURSE SUMMARY	<p>Otoscopy is an ear screening procedure to screen for illness during regular patient checkups and investigate ear symptoms. This course is a beginner's course for otoscopy. Students will cover anatomy and physiology, paediatric health assessments and the correct use of an otoscope.</p> <p>This course is recommended as an introduction to ear health.</p>
VALUE FOR ORGANISATIONS	<p>Introducing Otoscopy Ear Health Screening is important for investigating symptoms or illness that patients experience and actively seek medical assistance with. Build this learning with an understanding of anatomy and physiology, correct use of the otoscope, assessment principles of adults and children, and deliver this knowledge across a wide number of clinical sectors.</p>
UNITS OF COMPETENCY	NA
COST	\$400
PRE-READING	No pre-reading
DELIVERY & ASSESSMENT	Half-day face-to-face workshop
ESTIMATED HOURS OF STUDY	4 hours of active learning.
CPD HOURS	<p>As a general guide, one (1) hour of active learning equates to one (1) hour of CPD. It is the responsibility of the individual student to calculate how many hours of active learning have been completed. The hours of active learning estimated above should act as a guide to CPD hours.</p>
ENTRY REQUIREMENTS	To view entry requirements please refer to the next page.
TERMS AND CONDITIONS	<p>Visit benchmarkgroup.com.au/terms-and-conditions View Student Handbook</p>

Course outline

Many healthcare roles can perform otoscopy and hearing screening tests. Understanding the basics of the anatomy of the ear and hearing function can be a skill that can translate across many different sectors: aged care, primary health care centres and the education industry.

Students in the Otoscopy course will learn the fundamentals of 'good' ear and hearing health, understand basic ear health assessment principles, perform otoscopy safely, and why it is so important to screen patients.

Course outcome

Upon successful completion of the course students should have the ability to:

- Understand the anatomy and physiology of the ear
- Understand the process of sound and hearing
- Recognise tympanic landmarks
- Understand basic ear health assessment
- Perform otoscopy safely

Course content

This face-to-face course is an introduction to anatomy and physiology, the importance of hearing screening, tympanic membrane assessment landmarks, and otoscopy.

Course structure

The face-to-face workshop involves a lecture and practical workshop activities involving the human auditory system, the mechanisms of hearing and valuable components of otoscopy. Students work with peers in the classroom to conduct simulated examinations as practical skills activities.

Entry Requirements

Entrants to the Otoscopy course must provide evidence of a relevant professional role. Relevant roles would include:

- Aboriginal and/or Torres Strait Islander Health Workers
- Aboriginal and/or Torres Strait Islander Health Practitioners
- Aged Care Health Workers
- Registered Nurses
- Enrolled Nurses
- Allied Health Professionals, E.g., Audiologists
- General Practitioners
- Others on application.

About accessIQ

We are paving the way for innovative and easy online learning through our bespoke online course and assessment platform, accessIQ.

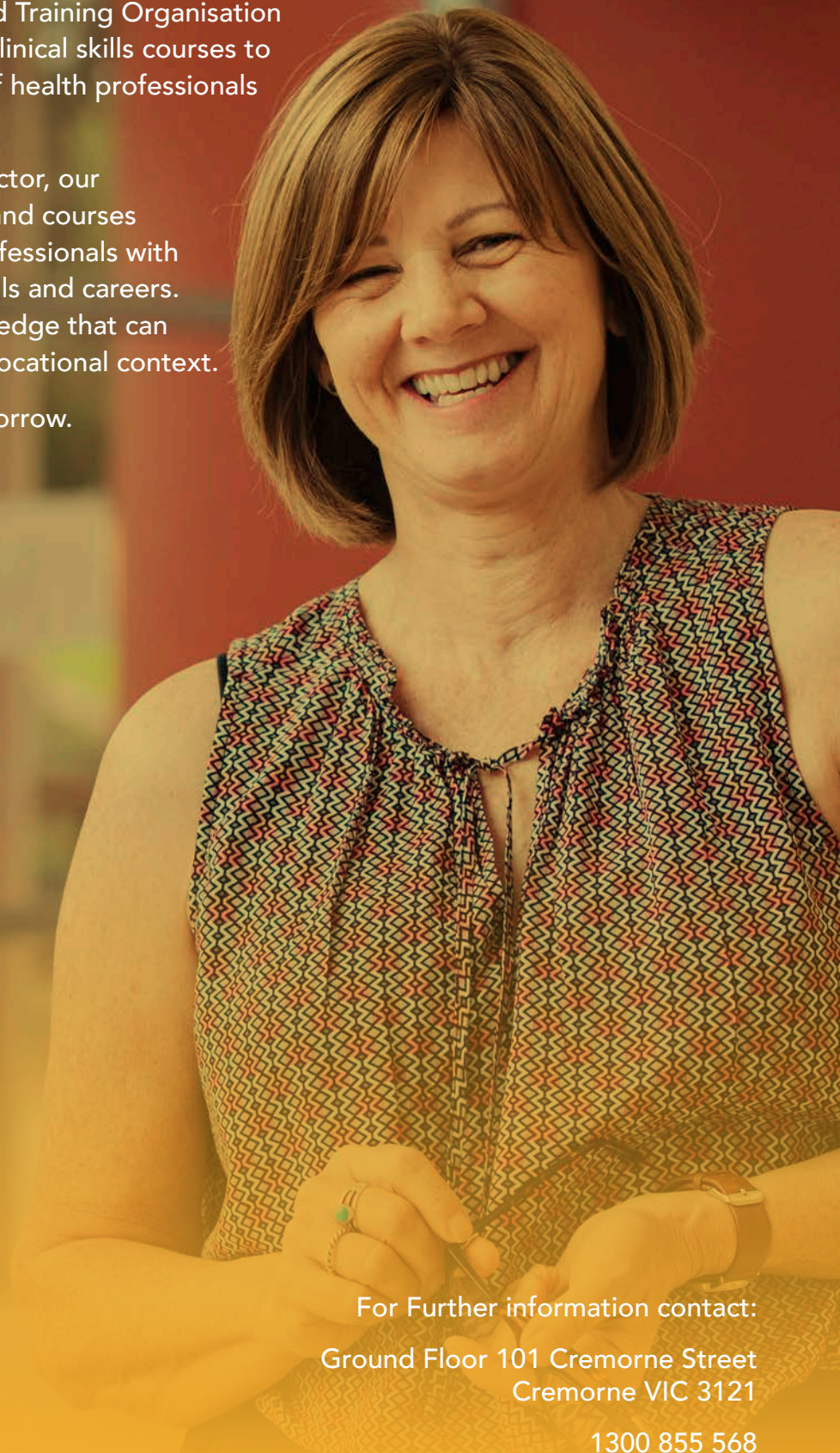
- Study anywhere, anytime
- Edit saved answers, review before submitting
- Live student console – tracks assessment, enrollments and waitlists
- Access statement of results and resource library.

About Benchmark Group

Benchmark Group is a Registered Training Organisation (RTO 21824) delivering a range of clinical skills courses to meet the needs of a broad range of health professionals across Australia.

As an RTO working in the health sector, our focus is on the delivery of courses and courses designed to provide healthcare professionals with the opportunity to expand their skills and careers. We concentrate on skills and knowledge that can be immediately implemented in a vocational context.

Skills learnt today can be used tomorrow.



For Further information contact:

Ground Floor 101 Cremorne Street
Cremorne VIC 3121

1300 855 568

courses@benchmarkgroup.com.au

www.benchmarkgroup.com.au

