



# Wound Closure: Advanced Practice

COURSE INFORMATION

## Course snapshot

<b>COURSE TITLE</b>	<u>Wound Closure: Advanced Practice</u>
<b>COURSE SUMMARY</b>	Wound Closure: Advanced Practice aims to further expand students' knowledge and skills required in the clinical management of local anaesthetic administration and closure of advanced wounds in a primary health care environment including community-based, educational, dermatological, occupational and in general practice settings.
<b>VALUE FOR ORGANISATIONS</b>	Further development of wound closure knowledge and skills increases capability of wound clinical management across a range of primary healthcare settings including general practice, community-based care, dermatological, and educational. Understand guidelines for administration of local anaesthetics, infection management, post-operative care, MBS billing item numbers, professional indemnity considerations, all covered in this Advanced Practice Program.
<b>UNITS OF COMPETENCY</b>	NA
<b>COST</b>	\$700 (Inc. GST) per student
<b>PRE-READING</b>	There is no pre-reading for this course.
<b>DELIVERY &amp; ASSESSMENT</b>	Full day face-to-face workshop and in-class activities assessed by a qualified assessor.
<b>ESTIMATED HOURS OF STUDY</b>	8 hours of active learning.
<b>CPD HOURS</b>	As a general guide, one (1) hour of active learning equates to one (1) hour of CPD. It is the responsibility of the individual student to calculate how many hours of active learning have been completed. The hours of active learning estimated above should act as a guide to CPD hours.
<b>ENTRY REQUIREMENTS</b>	Registered Nurses, Enrolled Nurses, Allied Health Professionals, General Practitioners, General Practice Registrars, Aboriginal and/ or Torres Strait Islander Health Practitioner or other relevant Allied Healthcare Workers on application.
<b>TERMS AND CONDITIONS</b>	<u><a href="http://benchmarquegroup.com.au/terms-and-conditions">Visit benchmarquegroup.com.au/terms-and-conditions</a></u> <u><a href="#">View Student Handbook</a></u>

## Course outline

Wound Closure: Advanced Practice enables healthcare professionals to further develop their knowledge and skills in suturing techniques, advanced wound flap management and closure, skin assessment utilizing dermoscopy, histopathology collection, safe handling and administering of local anaesthetic, advanced wound support and scar management in primary healthcare and community-based settings. This course is at the advanced level of the course in Wound Closure.

## Course outcome

At the successful completion of the Wound Closure: Advanced Practice students will have advanced knowledge and skills to determine the best wound closure technique to achieve durability and simplicity. Students will learn the ability to close wounds using a variety of advanced methods and materials including multiple layer closure, elliptical excision and z-plasty Closure.

## Course structure

Course delivery and assessment for Wound Closure: Advanced Practice includes a full day face-to-face workshop and in-class activities assessed by a qualified assessor.

During this one-day workshop, students will practice skills including Local anaesthetic administration, Introduction into Dermoscopy, Skin biopsy and histopathology collection, Deep tissue wound closure, Elliptical excision, Elliptical excision Z-Pasty and Advancement flap closure.

To achieve competency in this course, students must demonstrate competency through realistic skills simulations.

There is no pre-reading and all course materials are supplied.

## Course content

The one-day workshop topics and activities will include:

- Advanced skin physiology
- Sharps handling and safety
- Guidelines for administration of local anaesthetics
- Skin assessment: identifying skin lesions utilizing dermoscopy
- Histopathology collection (punch & shave biopsy)
- Advanced wound closure (flaps)
- Advanced wound support

## Bundle Option

The Wound Closure:advanced Practice Course is available to purchase as a bundle for \$892. Save \$298 when you opt into the bundle. No need to complete both courses straight after each other, the beauty of the bundle is both the reduced cost in both courses and the flexibility to complete each course at a time that suits you.

- **Over 25% OFF** for both courses
- Two courses for \$1,000, **SAVE \$400**
- Workshop date flexibility
- Learn more via our [Bundle page](#) on our website

## About accessIQ

We are paving the way for innovative and easy online learning through our bespoke online course and assessment platform, accessIQ.

- Study anywhere, anytime
- Edit saved answers, review before submitting
- Live student console – tracks assessment, enrollments and waitlists
- Access statement of results and resource library.

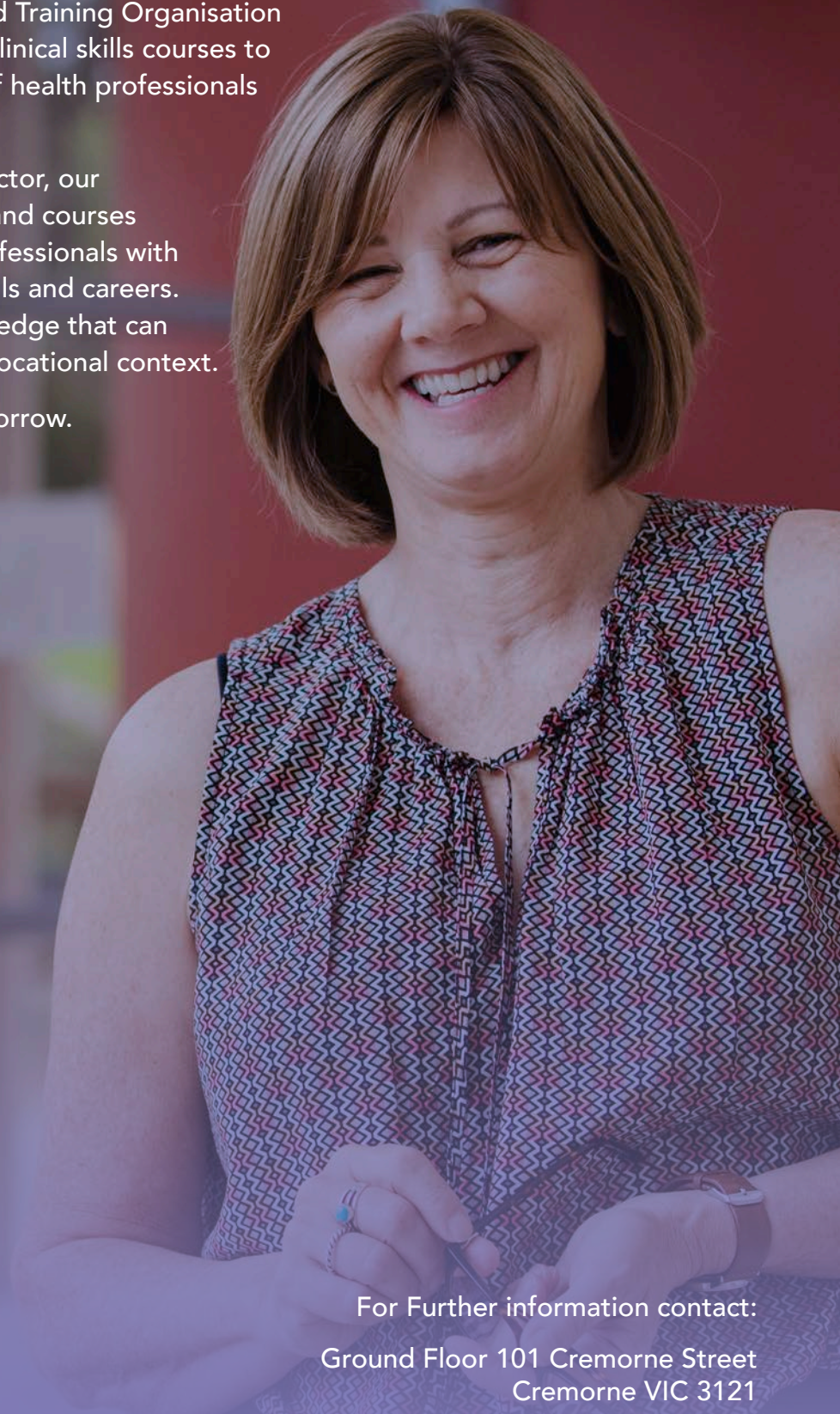


# About Benchmark Group

Benchmark Group is a Registered Training Organisation (RTO 21824) delivering a range of clinical skills courses to meet the needs of a broad range of health professionals across Australia.

As an RTO working in the health sector, our focus is on the delivery of courses and courses designed to provide healthcare professionals with the opportunity to expand their skills and careers. We concentrate on skills and knowledge that can be immediately implemented in a vocational context.

Skills learnt today can be used tomorrow.



For Further information contact:

Ground Floor 101 Cremorne Street  
Cremorne VIC 3121

1300 855 568

[courses@benchmarkgroup.com.au](mailto:courses@benchmarkgroup.com.au)

[www.benchmarkgroup.com.au](http://www.benchmarkgroup.com.au)

